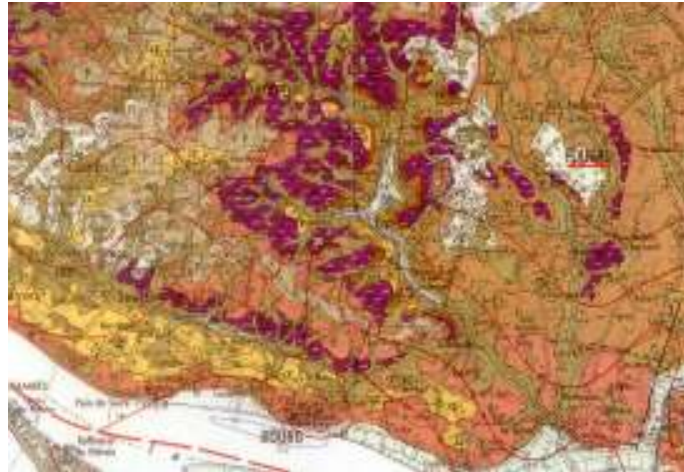


Château Fougas

Terroir



Area

12 hectares: Appellation Cotes de Bourg.

The Terroir.

Geology. The superficial strata were deposited by water and wind. These have been washed down slope to form a mineral rich colluvium of ferruginous blue and red clay along with sand and gravel. This overlies limestone of the Fronsac Molasse which provides excellent drainage.

The topography is also interesting: Fougas lies on a fan of deposits which from a plateau at an altitude of 40m. This is naturally drained by two small streams on either side thereby greatly restricting any chance of erosion occurring.

Our use of organic fertilisers and approaches to soil management promote animal life and microflora. This encourages the vine roots to deeply penetrate the soil and assimilate the assemblage of minerals in this terroir so that the specific characteristics of the soil are expressed in the wine.

